

484 BROOME

SOHO RETAIL FOR LEASE



GROUND FLOOR: 3,000 SF (1,500 DIV)

14' CEILING HEIGHT

30 FEET OF FRONTAGE

EXCELLENT FOOT TRAFFIC

BASEMENT: 1,000 SF STORAGE

7.5' CEILING HEIGHT

HIGH VISIBILITY

ALL USES CONSIDERED

Greg Kim 646 470 1717
greg@sequoiapg.com | www.sequoiapg.com

SEQUOIA
PROPERTY GROUP

© Sequoia Property Group. All rights reserved. All information contained herein is from sources deemed reliable; however, no representation or warranty is made to the accuracy thereof.

VISUAL RENDERING

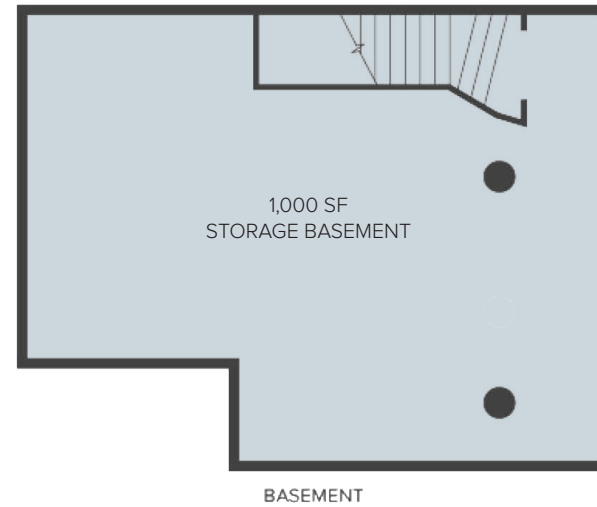
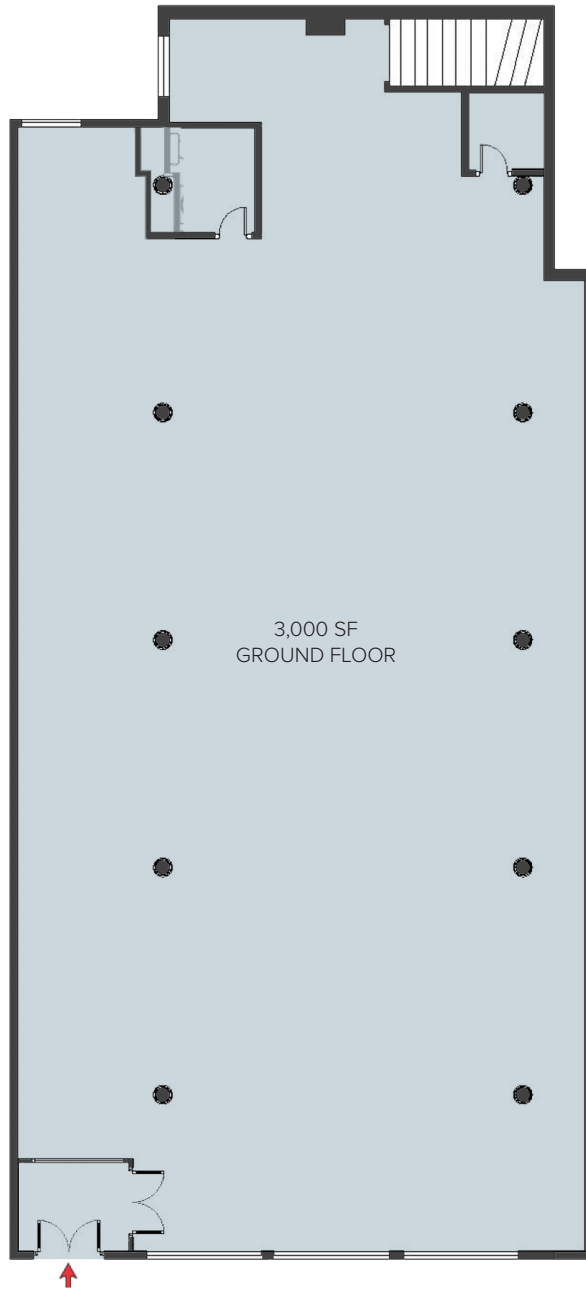


Greg Kim 646 470 1717
greg@sequoiapg.com | www.sequoiapg.com

SEQUOIA
PROPERTY GROUP

© Sequoia Property Group. All rights reserved. All information contained herein is from sources deemed reliable; however, no representation or warranty is made to the accuracy thereof.

FLOOR PLANS



NOTES:

- GROUND FLOOR IS CURRENTLY DIVIDED INTO 2 STORES
- VESTIBULE CAN BE MODIFIED FOR A SINGLE TENANT

RETAILER MAP

